

STOP MOTION

PART 2

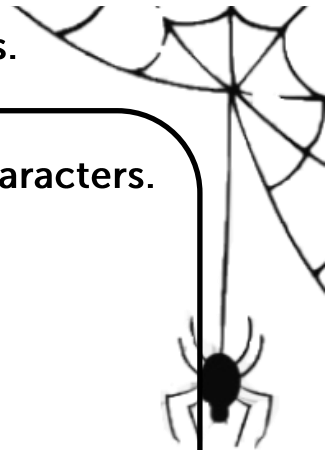


Print in Grey Scale

From the *Tudors*, 2007–2010, Designer: Joan Bergin

This resource shows you how to make a paper stop motion animation.

Now it is time to make your set and characters.



You can use the following to make your set and characters.

- Paper (of any colour)
- Paint, markers, crayons, pencils
- Scissors
- Glue
- Imagination!

The Background: This is the location that your story takes place.

How do you picture it?

Does it take place outside? Are there trees, clouds, sun, moon, buildings, gravestones?

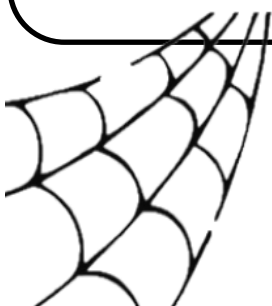
Does it take place inside? Is it in a castle or big house? Is it modern or old?

The Setting: These are the little things that make the scene.

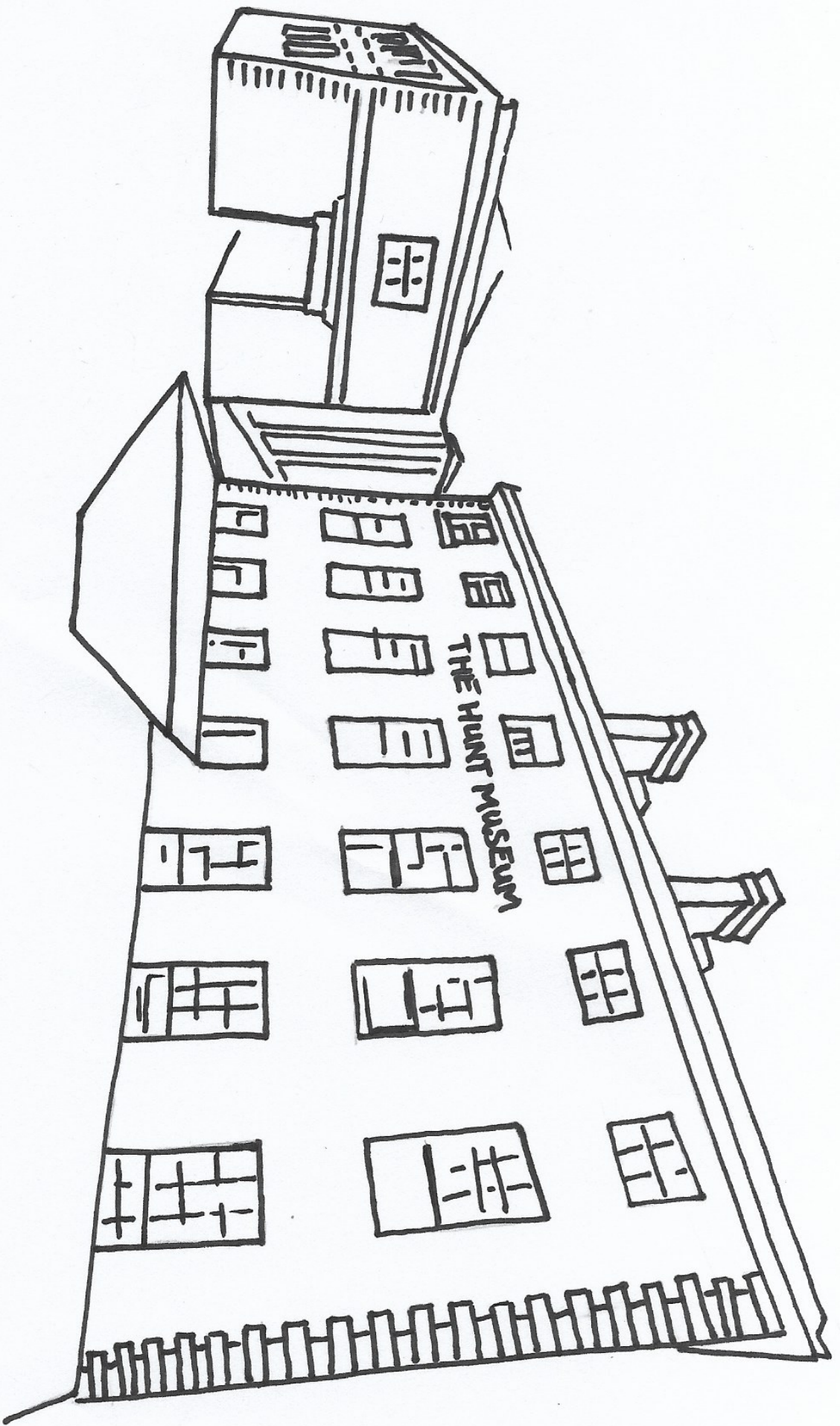
Are there bats in the sky? Is it a spooky building, can you see a ghost in the window? Is it a cloudy day? Is there scary lightning?

Props: These are the items that your character needs to tell their story.

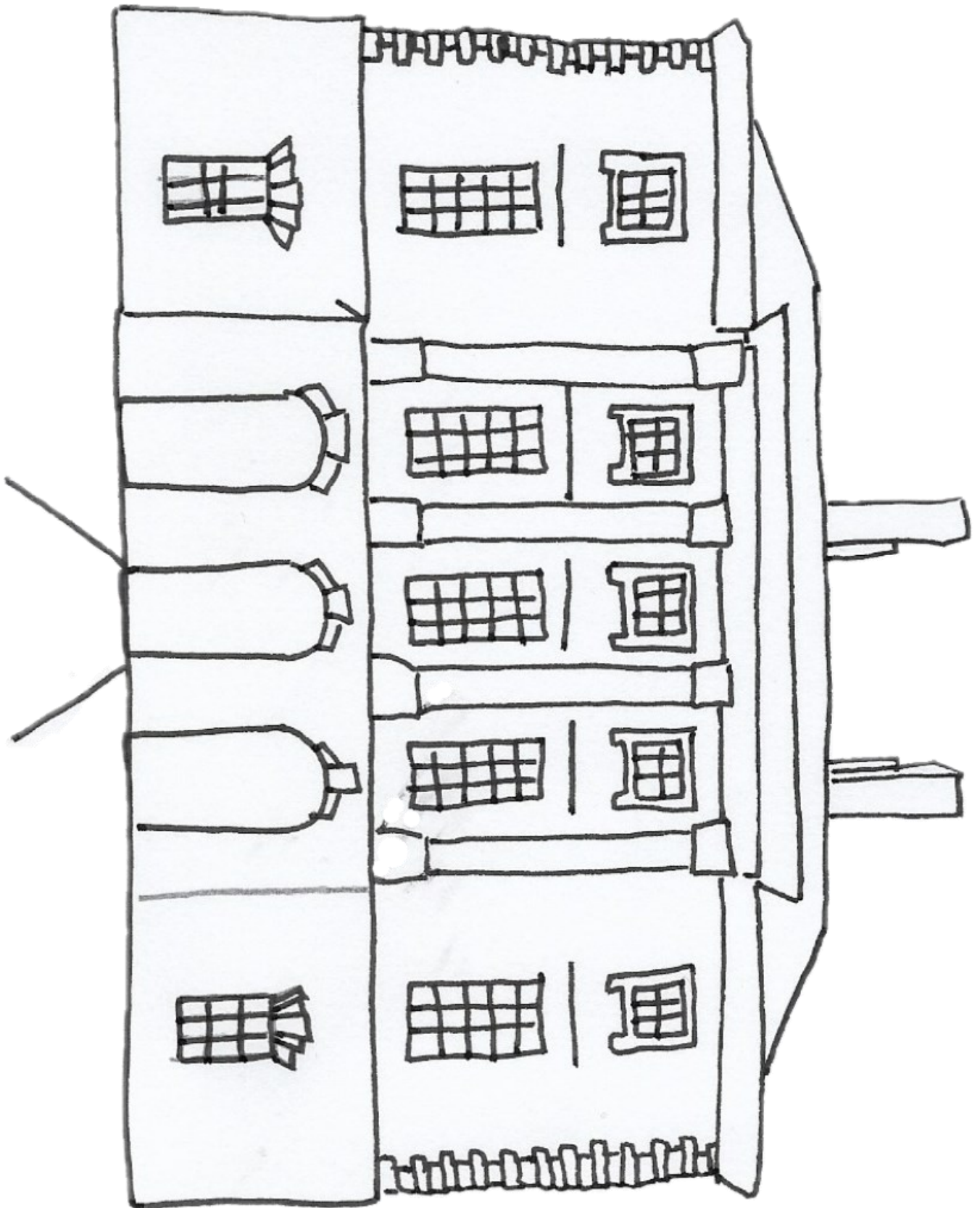
Does your character need a weapon? Do they need a mask that they can take off? Are they holding a pen? Typing on a computer or a typewriter? Do they need a car to get around in or a horse drawn carriage?



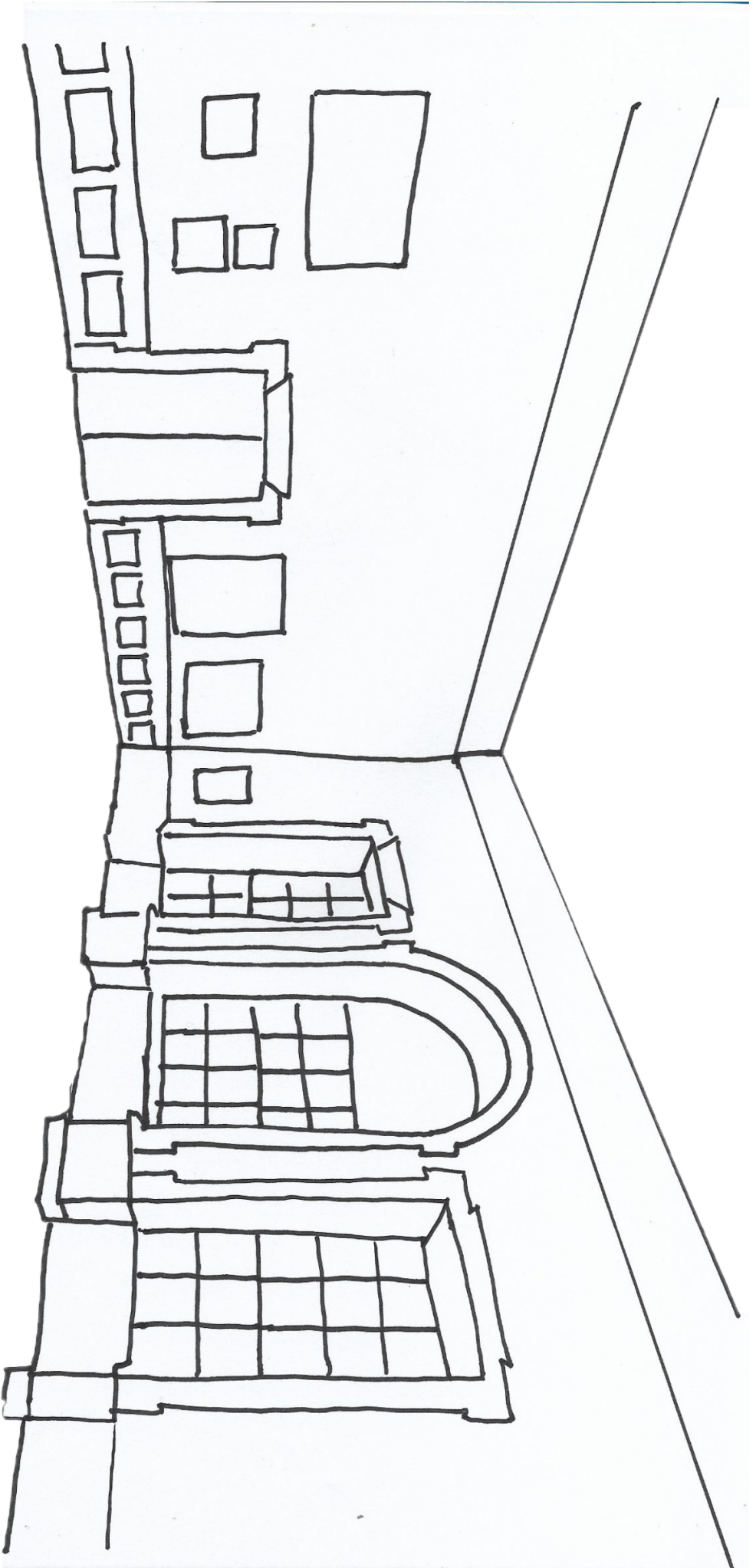
Use the following pictures or make your own
To create your Stop Motion Animation



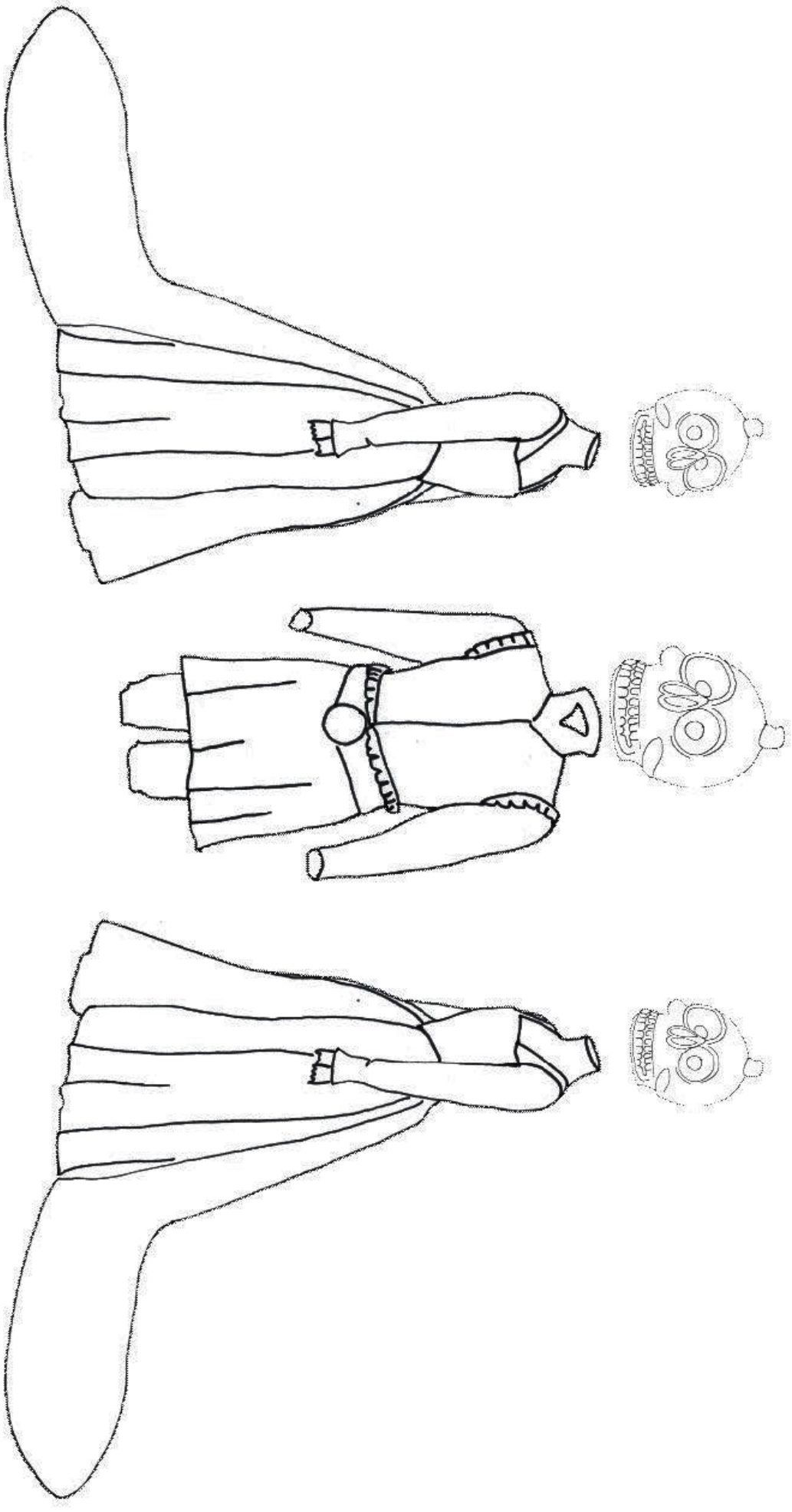
Set: The Front of the Hunt Museum



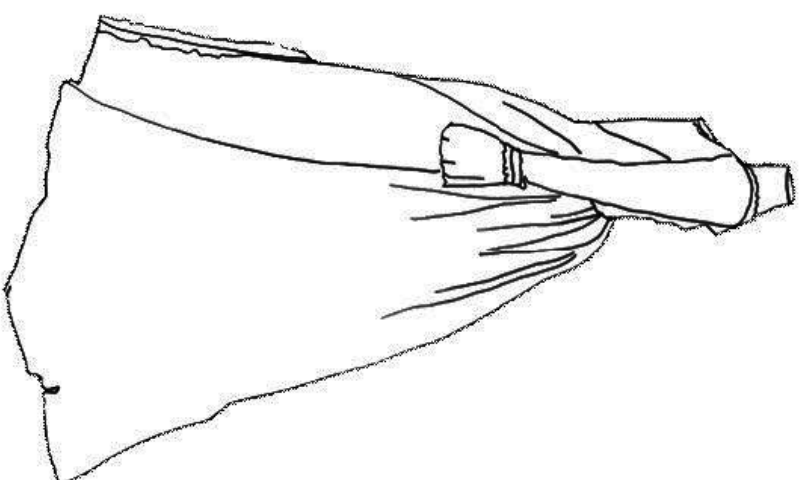
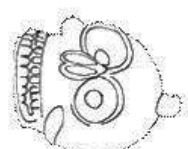
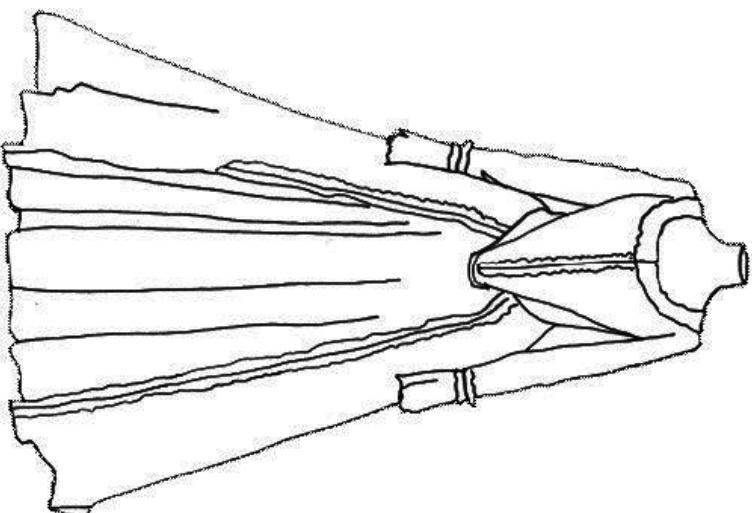
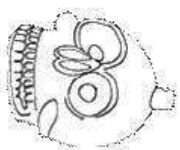
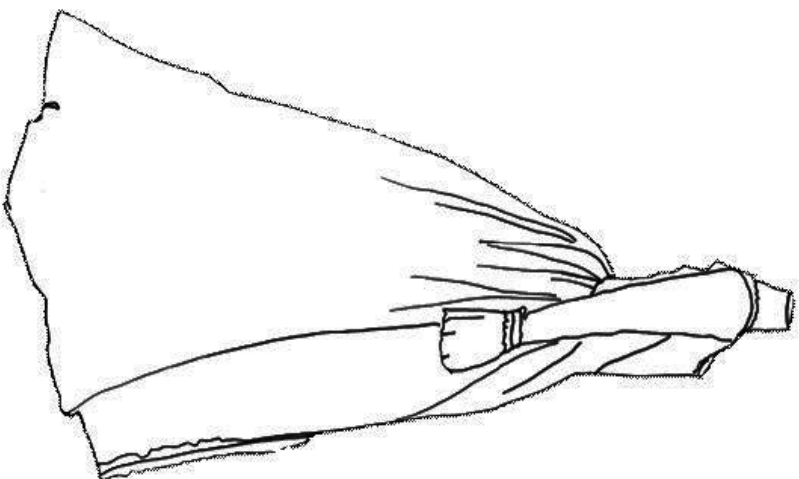
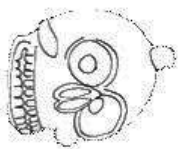
Set: The Back of the Hunt Museum



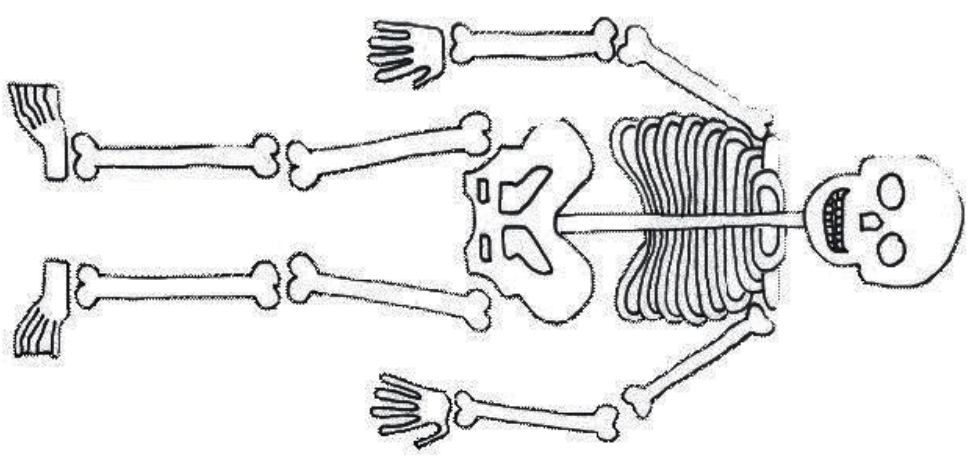
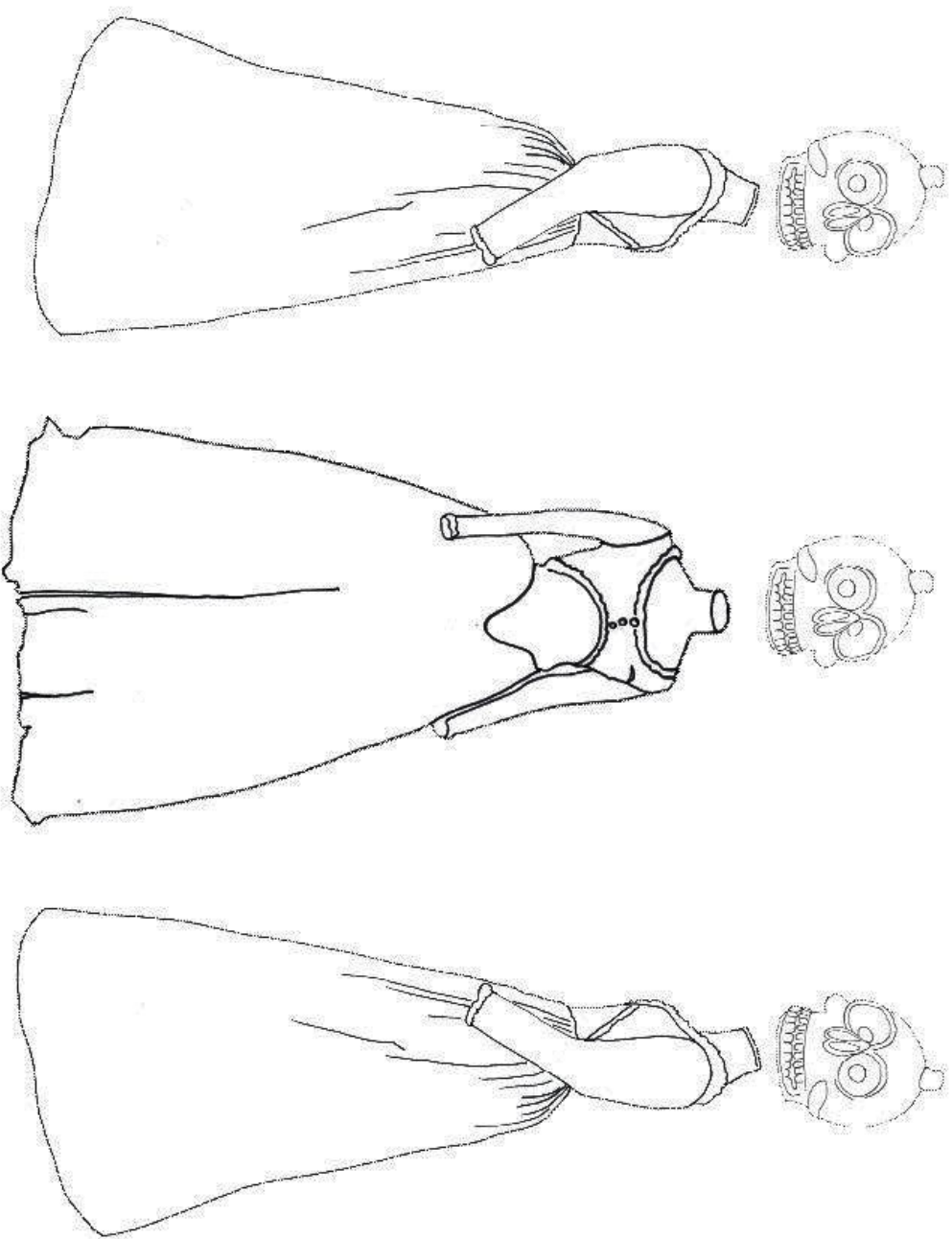
Set: The Captains' Room



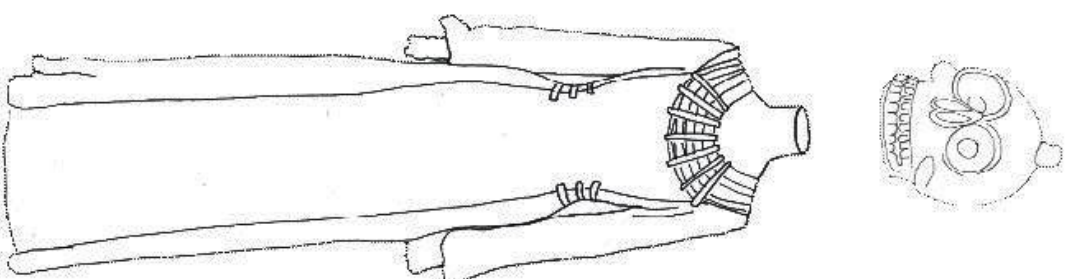
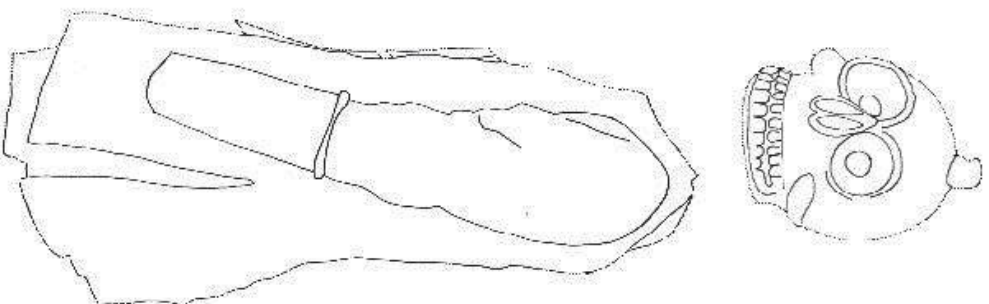
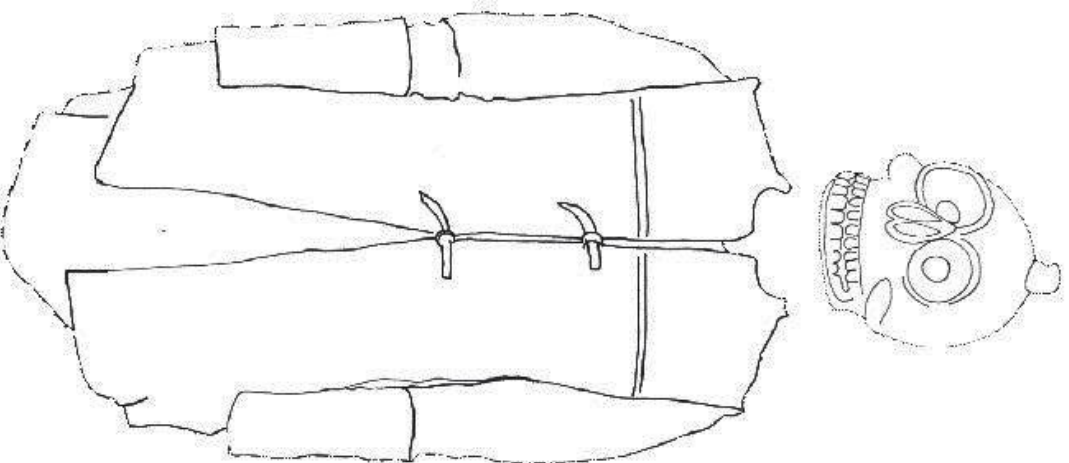
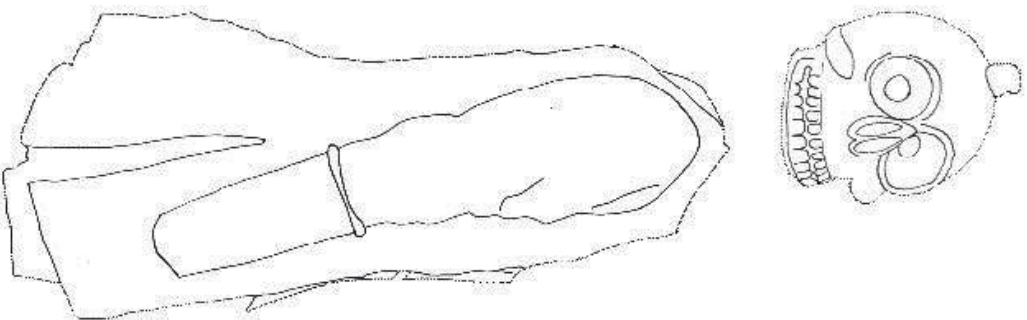
From the *Tudors*, 2007–2010, Designer: Joan Bergin



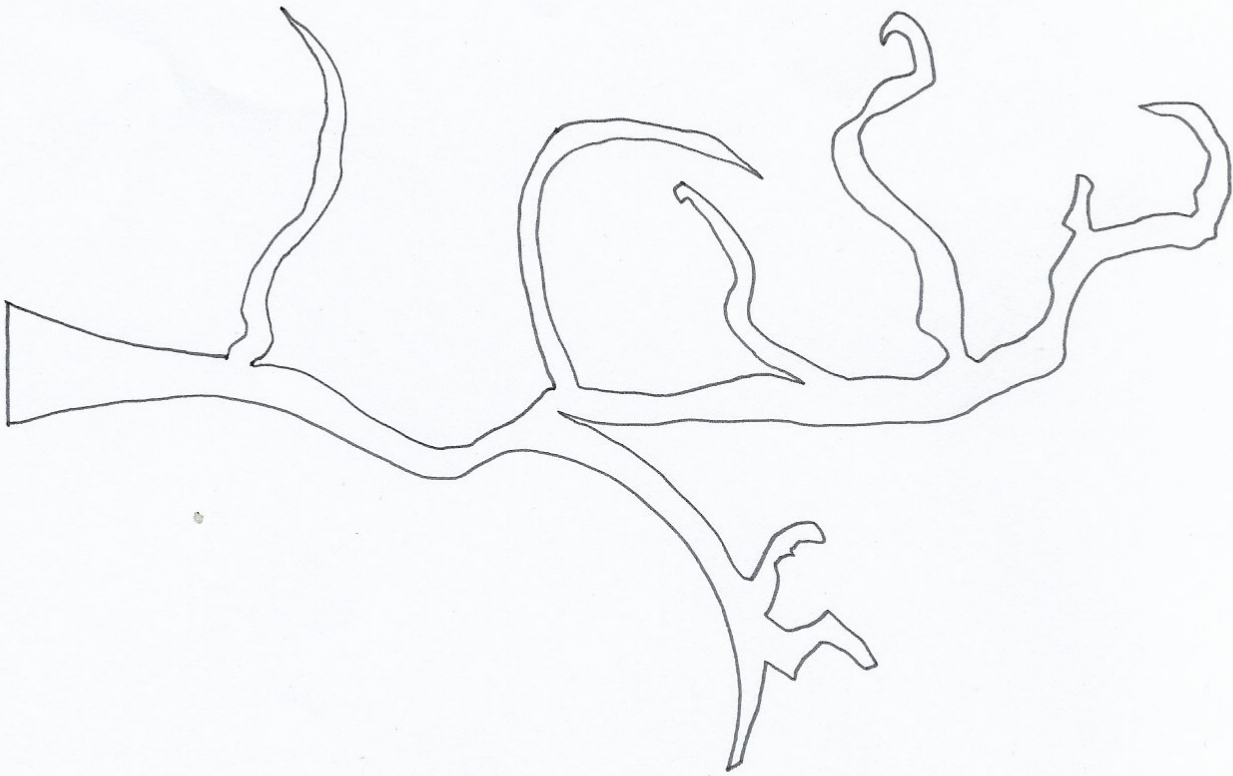
From the movie *Love and Friendship*, 2016, Designer: Eimer Ni Mhaoldomhnaigh



From the movie *Love and Friendship*, 2016, Designer: Eimer Ni Mhaoldomhnaigh



From the tv show *Vikings*, 2013, Designer: Joan Bergin



Spooky trees: Try drawing these freehand onto some black paper. You can make them as scary as you want to. Maybe some of the branches look like hands!