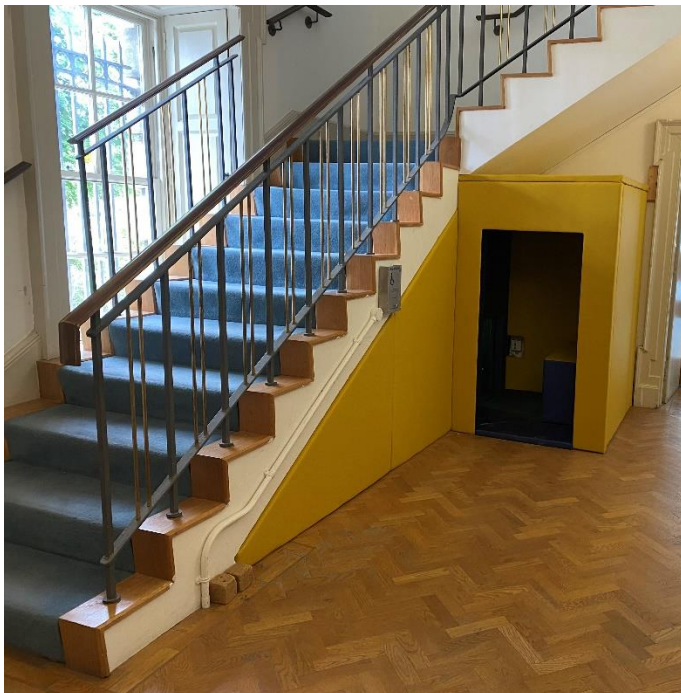




The sensory pod is located on the Lower Ground Floor, under the blue stairs, outside the Education Wing. It has two sections. The outer one has seating accommodation for one person. The inner section is a small room which is accessed by a low door. It contains soft walls, LED lights, and mirrors.

Note: right now, the sensory pod is not wheelchair accessible. We apologise for this inconvenience.

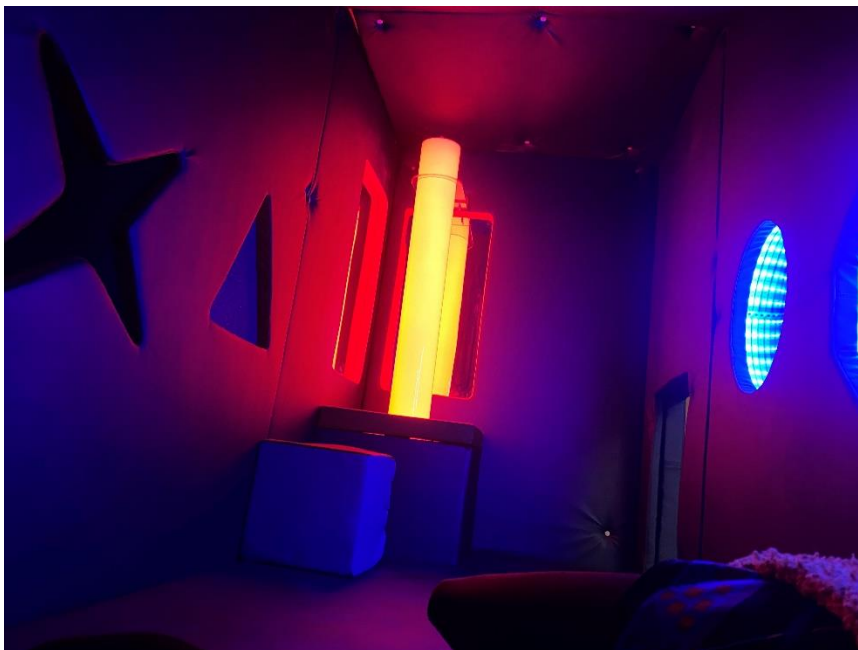
Photographs of the Sensory Room with further descriptions are provided below.



Photograph of the sensory pod's location, on the ground floor, under the blue stairs, which visitors use to access the Collection on Floor 1. It's exterior is yellow. Access is through a low sized door measuring 140cm in height.



Outer section of the sensory pod. It is blue and yellow. It has one soft bench designed to accommodate one person. There is also a very low sized open doorway which a person needs to crawl through. This leads to the inner section of the sensory pod.



Photograph of the inner section of our sensory room. It includes a tall colour changing LED lamp mounted on a cushioned plinth, one octagonal mirror and one circular mirror on the wall with colour-changing LED lights.