

Crinniú na nÓg 2025 at the Hunt Museum



Clár Éire Ildánach
Creative Ireland
Programme



Social Story

for

Pop Art Portraits

Sensory Friendly session



Suitable for young people ages 9 to 12

Booking Essential

When: **Saturday June 7th, 11am to 12.30pm**

Where: **The Hunt Museum Education Wing**

For queries or accommodation requests, please contact
maria@huntmuseum.com

Today I am going to the Hunt Museum to take part in a Pop Art Portraits workshop. During it, I will recreate faces from the Hunt Museum Collection in Pop Art style. This workshop is for Crinniú na nÓg, an Ireland wide day which encourages young people to participate in the Arts and to get creative.

Before I go to the Hunt Museum, I can use this [video based tour](#) to see what it is like.

When I arrive at the Museum, I should tell the staff member at the Reception desk that I am here for the Pop Art Portraits workshop.

Who will I meet at the workshop?

During the workshop, I will meet Hunt Museum staff member, Maria Cagney and artist, Enda Griffin, who will help me with the art activities.



There will also be 9 or 10 other young people participating in the workshop.

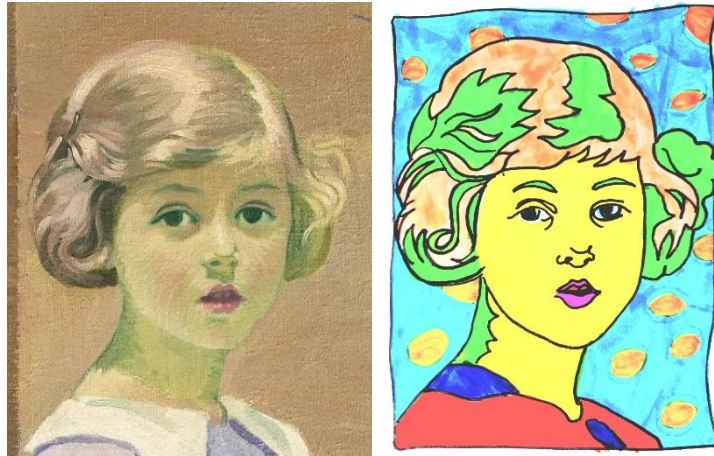
What will I do in the workshop?

I will explore some faces from statues and paintings from the Hunt Museum Collection. Enda and Maria will help me to use drawing and painting to recreate them in Pop Art style.

Pop Art was an art movement during the 1950s and 1960s. It had a very recognisable graphic art style which used bold line, vibrant colour and

pattern. You can learn more about the Pop Art movement by clicking [here](#)

This is an example of a face from the Collection and how it might look once it has been recreated in Pop Art style.



How will I create my Pop Art portrait?

I will choose the face from the Collection that I want to recreate. Maria will give me a colour photocopy of it.

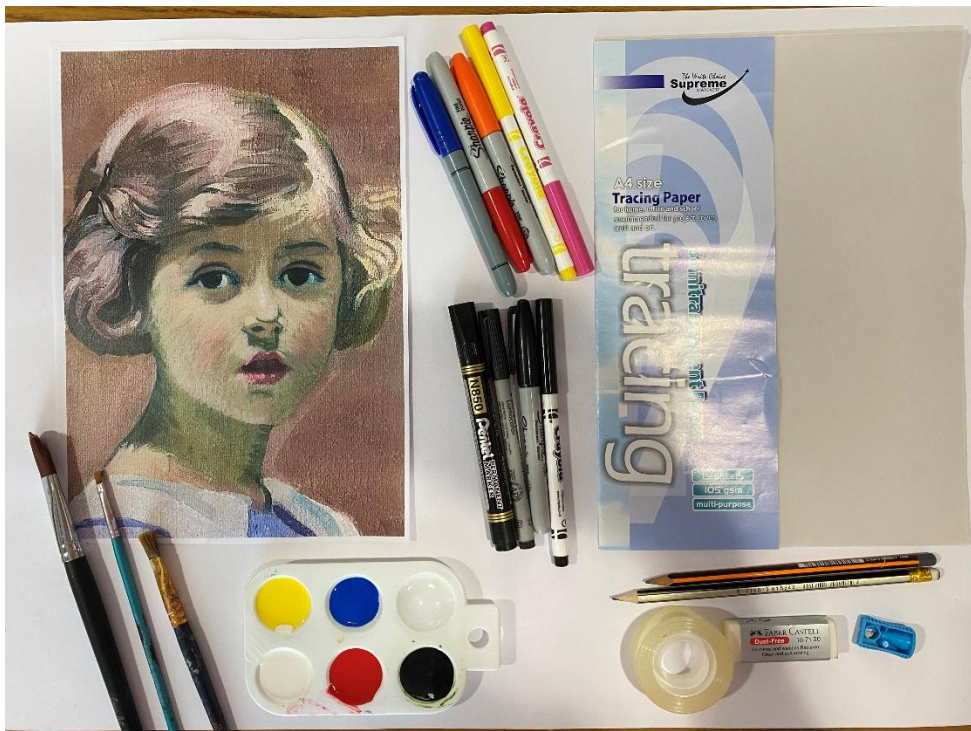
I can use Drawatorium and a black marker to trace the face just like in the photos below.



If I want, Enda and Maria can help me to use special projector which would allow me to increase my face tracing in size. This means that my final artwork would be much bigger.

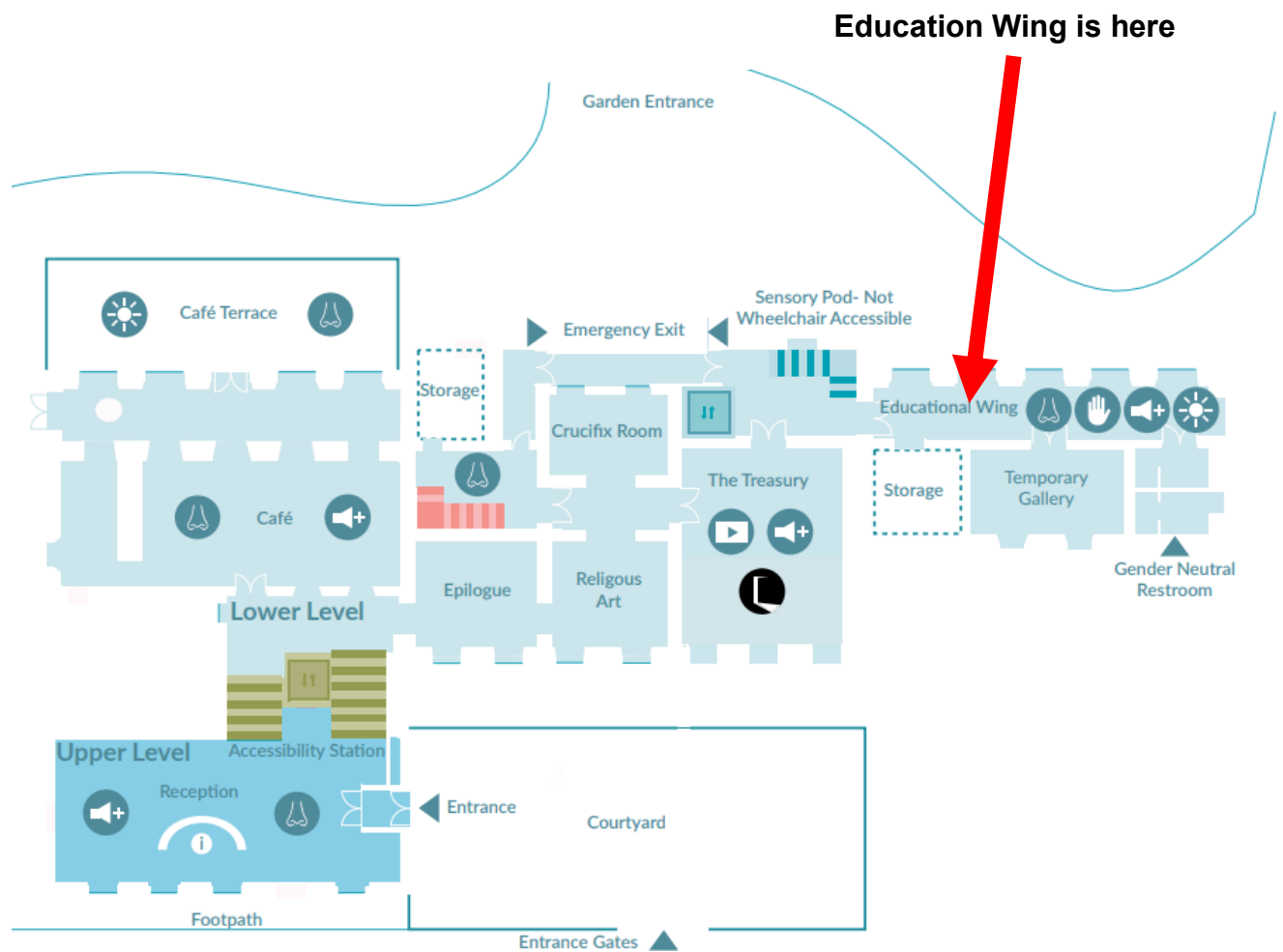


Art Materials I can use are:



Where will the workshop take place in the Museum?

It will take place in the Education Wing which is located on the Ground Floor's Lower Level. This is the same level as the Café.



Sensory Key

- Smell
- Restroom Symbols
- Intense Artificial Light
- Intense Natural Light
- Quieter Noise
- Louder Noise
- Tactile
- Digital Display
- Dark Space

What does the Education Wing space look like?

This space includes a long corridor with large windows which leave in lots of natural light. If this light bothers me, I can ask Maria for dark sunglasses.



This is a picture of the long corridor in the Education Wing.

The first door leads into a room that will be darkened so that we can use the projector.

The second open door, at the end of the corridor, is where I will find the bathroom.

Below is a picture of the darkened room in which I can use the projector



I can stim as much as I need to during the workshop. If I need a fidget or ear protectors, I can use the ones available in the Education Wing.

If I need to, I can use the Sensory Pod, which is located just outside the Education Wing doors.

